

# LEVERAGING SMART TECHNOLOGIES FOR IMPROVED LIFESTYLE

---

Alīna Mežciema  
LMT

Imt 



# LMT

Latvian Mobile Telephone,  
is the most experienced and  
best performing telecommunications  
company in Latvia

Market leader in all the traditional aspects  
of classical telco within single market of  
Latvia as well as top performing mobile data  
operator on the planet

LMT has begun transformation to become  
exporting multinational company of 4th  
industrial revolution and 5G era



# NEW HANZA

accenture

JAUNĀ  
TEIKĀ

imt

NEW  
HANZA  
CAPITAL

VEF  
KULTŪRAS PILS  
VĒRTĪBAS ELEGANTĀ FORMĀ

A modern-day initiative that aims to re-create the historical VEF area as a competitive innovation quarter in Northern Europe

V E F F R E S H

INFRASTRUCTURE

INNOVATION

TALENT

EDUCATION

V E F F R E S H

# OUR CORE COMPETENCES

Heritage from 4G

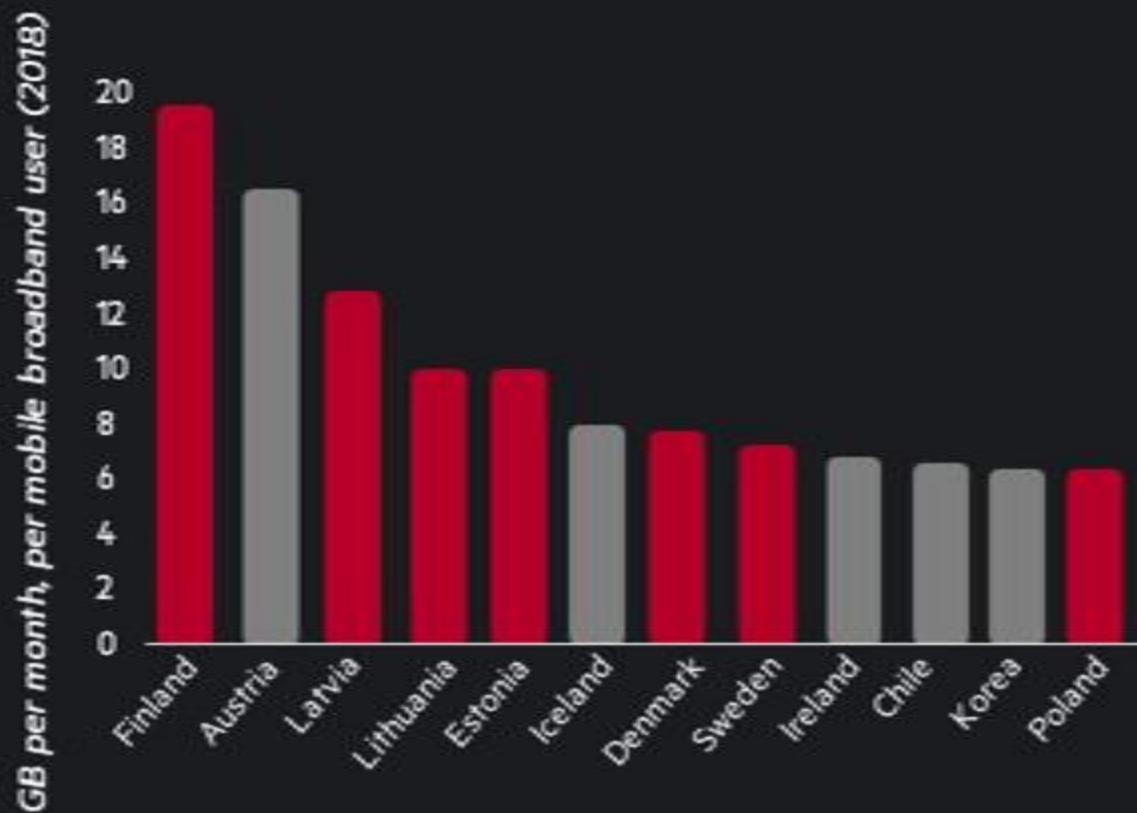


# 5G

High level technical  
expertise  
Honest customer  
relations  
Marketing efficiency & powerful  
brand  
Innovative & common-sense  
company culture

**Introducing 5G with 4G.**

**The Baltic Sea  
Region Has the  
World's Top Users  
of Mobile Data**



# 5G USE CASES



# NB-IOT vs LTE-M vs M2M/4G

Imt 



## NB-IoT

## LTE-M

## M2M/4G



Maximum battery



Low module cost



Maximum indoor coverage



Low data rates



No voice  
No sms



High latency



Limited mobility



Very long battery



Medium module cost



Good indoor coverage



Medium data rates



Voice/SMS possible



Low latency



Full mobility



Low battery



High module cost



Medium indoor coverage



High data rates



Voice/SMS supported



Very low latency



Full mobility

- Monitoring
- Smart City
- Predictive Maintenance
- Asset Tracking

- Tracking/ High Value Assets
- Health
- Device Control
- Wearables

- Security / Smart Video
- Vehicle Telematics





PUBLIC SAFETY



MOBILITY



DRONES



INTERNET OF THINGS

# CO-CREATION CONCEPT

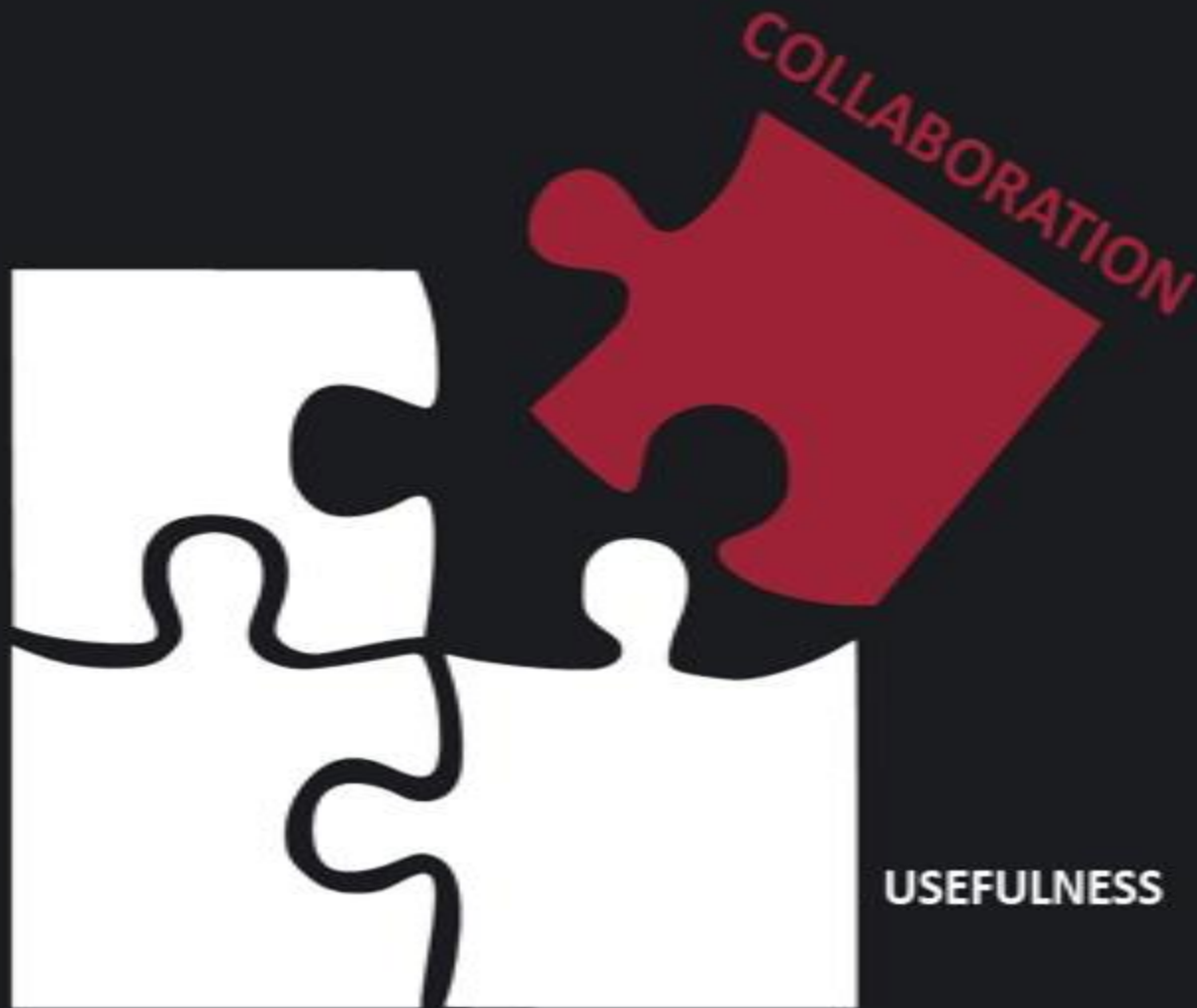


PARTNERSHIPS

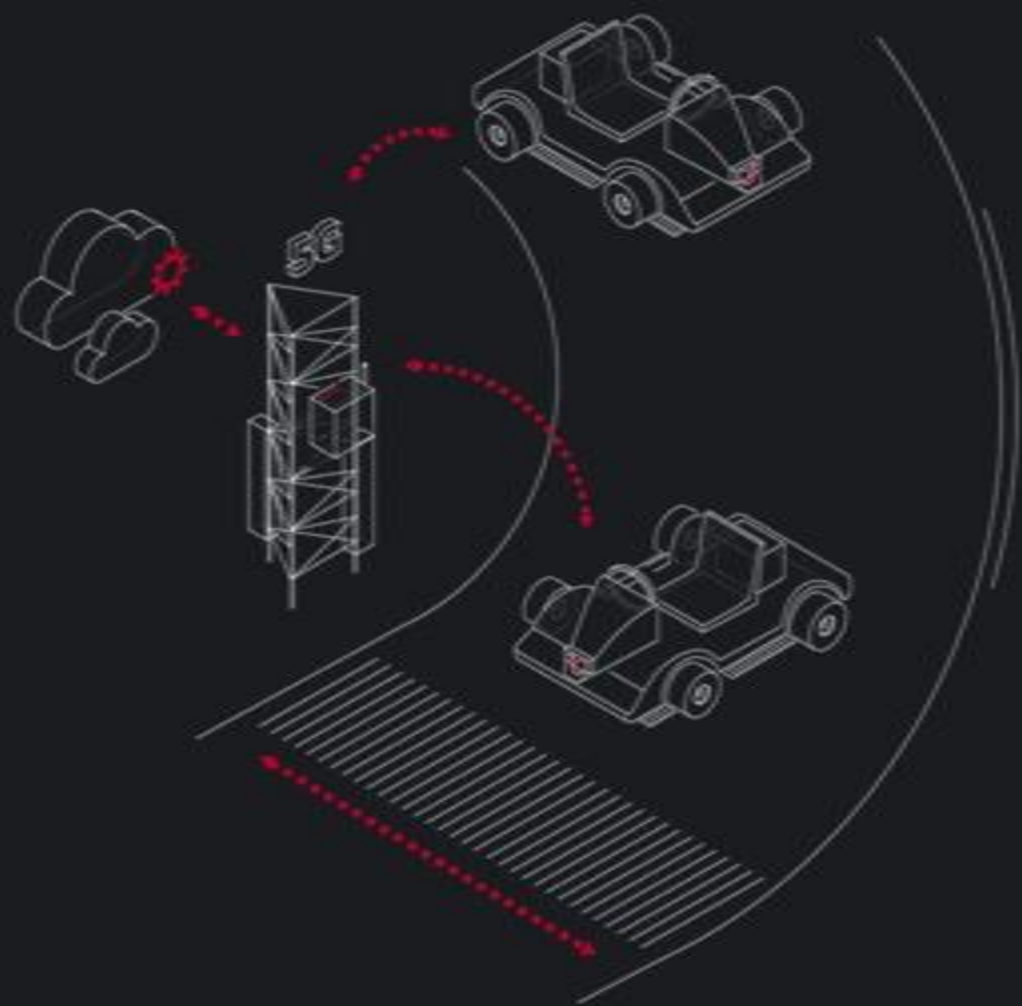
GOALS

USEFULNESS

COLLABORATION



# USE CASES



**Asset tracking**

**Connected buildings**

**Smart construction**

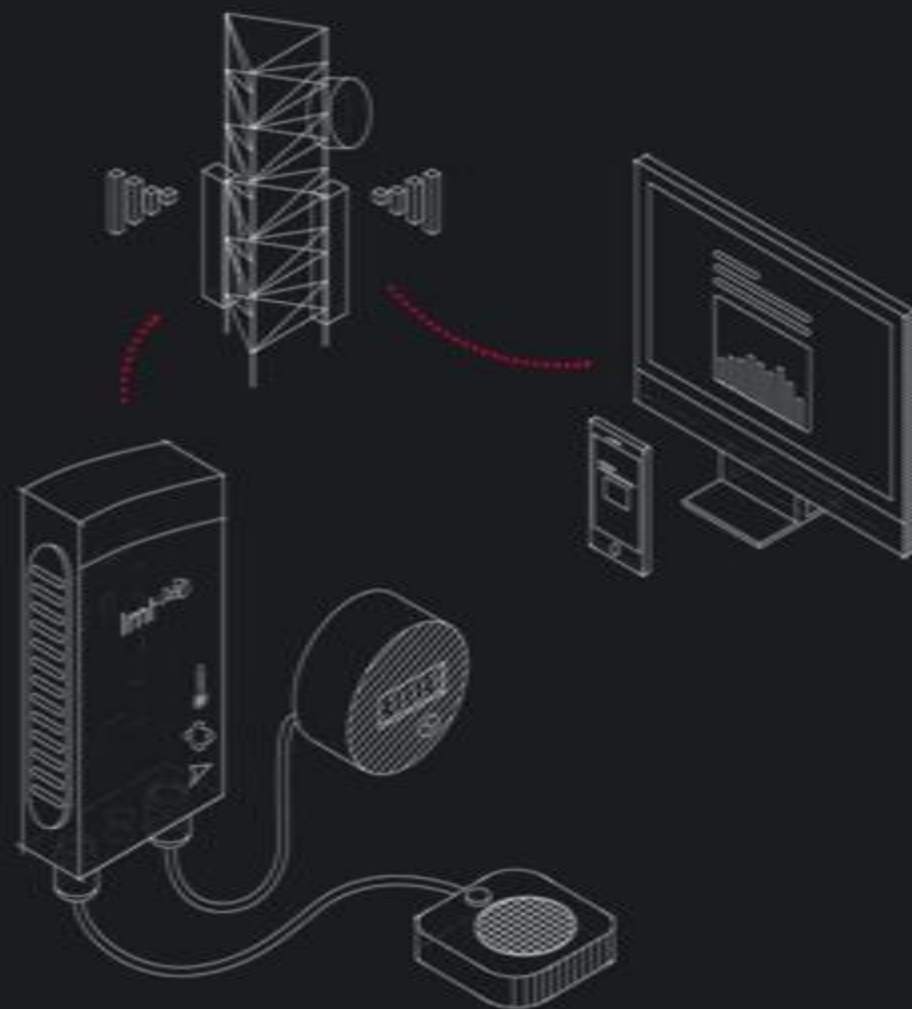
# INTERNET OF THINGS



Smart Lighting

Drainage Condition Monitoring

Air quality sensor



## Motion detection

- NB-IoT for sensor communication
- Wide detection angle
- Long detection range
- Car & pedestrian detection

## Inclination sensor

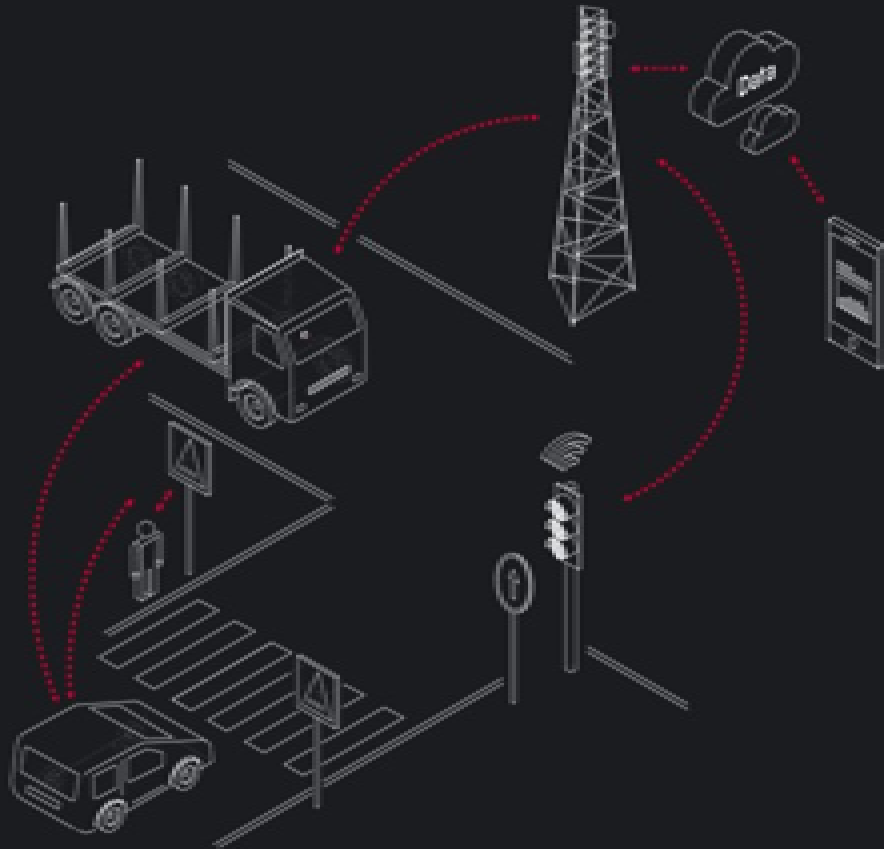
- Detects changes in xyz axes
- Monitors and reports changes in axes

## Dimming profiles

- Individual daily profiles
- Changeable remotely from software
- Standalone operation in any place in world
- Philips SR compatible

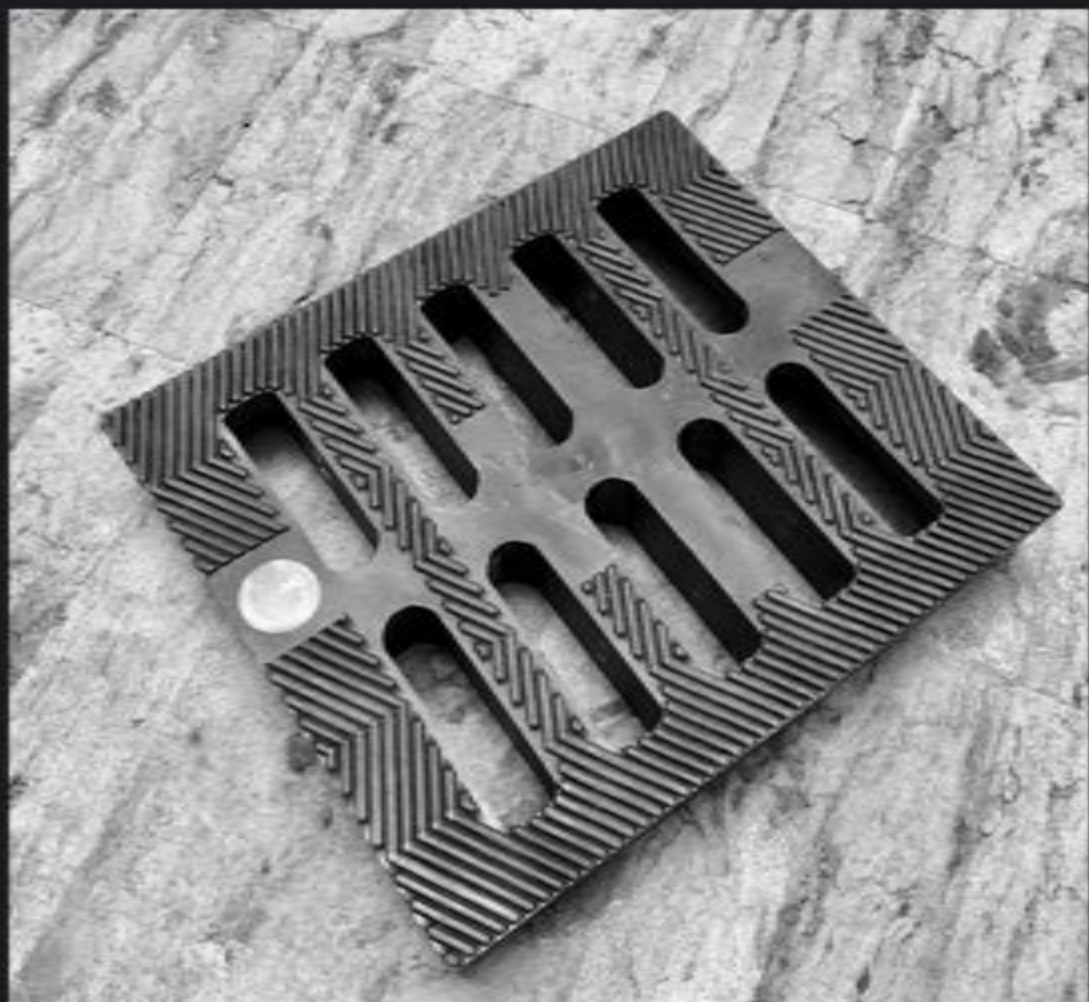
## For driver

- Voltage measurements
- Working hours
- Temperatures
- Failure detection
- Failure alerts



# DRAIN COVER

- Accelerometer, temperature sensor, depth sensor, and eSIM
- Blockage sensors within the grid report presence of leaves or mud which are preventing the drain from functioning properly
- Servicing alert that allows to plan a drain maintenance operation – minimizing wasted time and money on attending well-performing drains, while also responding to poorly performing drains quicker



# SAFE HOME AS A SERVICE



**Ongoing work on developing an affordable state-of-art smoke detector service with two-fold functionality**

- Smart smoke detector with a direct communication channel with relevant authorities in case of inaction from a tenant
- Home environment monitoring for a healthier living – user receiving actionable insights (based on CO<sub>2</sub>, atm. pressure, temperature, humidity and other measurements)

# SAMRT TIME TRACKING SOLUTION



Developed for construction companies

Registration of employee time with NFC cards and fingerprints

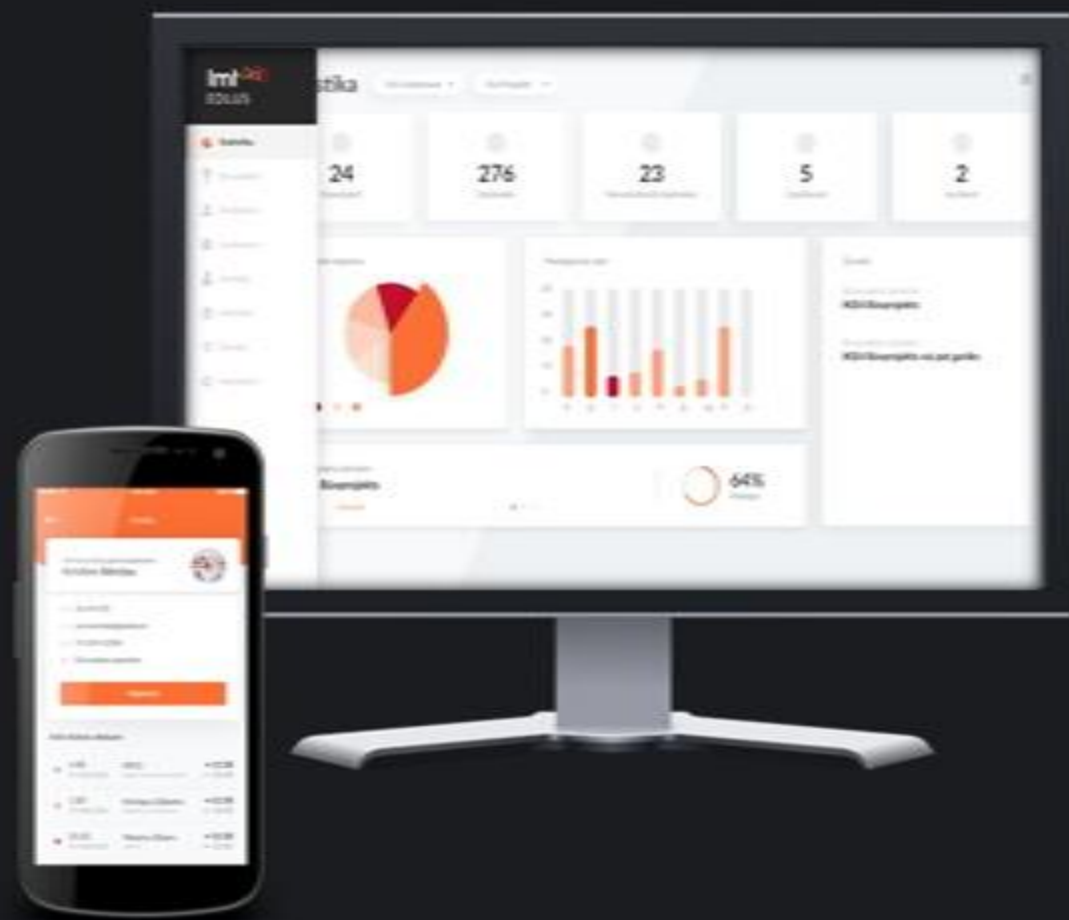
Android and IOS application

Convenient WEB platform for objects monitoring

Option to set up access control

Secure data storage in LMT cloud

API option for easy data synchronization





## CLOSED TYPE SITES



## OPEN TYPE SITES



**The future  
is mobile only**